



BENETEAU



YANMAR



# A SUSTAINABLE FUTURE

## —— New Value through Technology ——

Since YANMAR's founding more than 100 years ago, our company has been driven by a pioneering spirit for world-leading technology. Today, this technology continues to be a core focus, allowing us to utilize and transform all kinds of energy resources into power that can be harnessed for highly efficient human convenience.

Using our ever-advancing technology, YANMAR continuously strives to exceed customer expectations and deliver exceptional lifetime value by integrating our products, services and knowledge into superior quality, comprehensive solutions.

Food and energy are two needs of increasing importance for which YANMAR is committed to providing optimal solutions to our customers. We gather knowledge and insights from a variety of resources, research institutes and corporations to develop innovations aimed at creating a global sustainable society.

Sustainable prosperity for all and, a sustainable natural environment. YANMAR will pursue these two "sustainables" to the next level, towards a new era of prosperity in the coming century.

# YANMAR

# 100+ YEARS OF INNOVATION, 75 YEARS OF MARINE, 50 YEARS OF SAILING...

- 1912 ● Founded
- 1933 ▼ Developed world's first small horizontal commercialized modern diesel engine, HB 5-6 hp.
- 1947 ▼ First marine engine model launched for fishing boats, LB 5-7 hp.
- 1971 ▼ In response to the increasing interest in pleasure boating and sailing, YANMAR developed its first purpose-built recreational marine engine, PMX 6-8 hp. The PMX was shortly followed by the YSE (Yacht Series Engine) in 1972, built specifically for sailing yachts.
- 1968 ▼ YANMAR became the first diesel engine manufacturer awarded with the Deming Prize. YANMAR first committed to monitoring quality control in 1954, which would become the foundation of YANMAR's now worldwide reputation for durability and reliability. The Deming Prize is the longest-running, highest award given for Total Quality Management.
- 1994 ▼ YANMAR continued to develop engines over the years with industry leading and award-winning technology, becoming the first enterprise to be awarded marine diesel engine NOx certification by the International Maritime Organization (IMO).
- 2014 ▼ Introduced the 4JH-CR Series, in advance of and far exceeding EPA Tier III emissions regulations, bringing the benefits of common rail technology to sailing and smaller vessels.
- Present ▼ Now with the most fuel efficient and clean diesel inboard engines in their class, YANMAR continues to deliver the most reliable, proven, and premium engines in the world, becoming...

● **THE GLOBAL STANDARD IN SAILBOAT  
AND SMALL CRAFT PROPULSION**

# ENHANCING EXPERIENCES WITH PROVEN MARINE TECHNOLOGY

## LEGENDARY INNOVATION

Over 100 years of innovation from the inventors of the modern diesel engine with enduring, dedicated focus on advancing marine applications.

## YANMAR RELIABILITY

Through intensive and proven engineering, we proudly manufacture premium and durable engines that last year after year.

## GLOBAL SUPPORT NETWORK

Boat with confidence trusting our network of sales and service centers are available for quick and reliable support in over 130 countries worldwide.

## DRIVEN BY SUSTAINABILITY

Yanmar's commitment to community and environment drives our products towards sustainable solutions so we can ensure a better world for future generations.



# YANMAR - BENETEAU PARTNERSHIP



**YANMAR**



**BENETEAU**

*YANMAR's mission is to provide sustainable solutions that enrich and improve people's lives. Working in a long-term partnership with BENETEAU allows the two companies to deliver memorable sailing experiences to customers discovering exciting new horizons.*

We work closely with BENETEAU to provide complete marine solutions, guaranteeing your precious time out on the water is optimized in safety and comfort. Our premium marine engines are built to last for decades and thousands of hours, season after season. You can also be assured that we are committed to helping to protect the world's future communities and environment by achieving record low emissions measurements for our new generation common-rail diesel engines.

With a large global marine sales and service network YANMAR dealers can be found across the world - even in remote places. They have thoroughly trained and fully-equipped staff with access to the complete range of genuine YANMAR parts, and are ready to help with in-depth advice and hands-on assistance. This means that BENETEAU customers can leave the port in search of exciting adventures with complete confidence. They will only need to focus on the enjoyment and pleasure their catamarans offer.

# YANMAR ENGINES IN BENETEAU BOAT MODELS



## **First 27**

Length Overall 26'3"  
Hull - beam 8'4"



### **2YM15 + KM2P**

15 mhp / 10 kW  
3600 rpm



## **Oceanis 30.1**

Length Overall 31'3"  
Hull - beam 9'10"



### **2YM15 + KM2P**

15 mhp / 10 kW  
3600 rpm

*option:* **3YM20 + KM2P**

20 mhp / 15.3 kW  
3600 rpm



## **Oceanis 34.1**

Length Overall 35'4"  
Hull - beam 11'9"



### **3YM20 + KM2P**

21 mhp / 15.3 kW  
3600 rpm

*option:* **3YM30 + KM2P**

30 mhp / 21.3 kW  
3200 rpm



## **First 36**

Length Overall 36'1"  
Hull - beam 12'6"



### **3YM30AE + SD25**

30 mhp / 21.3 kW  
3200 rpm



## ***Oceanis 38.1***

Length Overall 37'9"  
Hull - beam 13'1"



### ***3YM30AE + SD25***

30 mhp / 21.3 kW  
3200 rpm



## ***Oceanis 40.1***

Length Overall 42'3"  
Hull - beam 13'9"



### ***4JH45 + KM35P***

45 mhp / 33.1 kW  
3000 rpm



## ***Oceanis 46.1***

Length Overall 47'11"  
Hull - beam 14'9"



### ***4JH57 + SD60***

57 mhp / 41.9 kW  
3000 rpm

*option:* ***4JH80 + SD60***  
80 mhp / 58.8 kW  
3200 rpm

# YANMAR ENGINES IN BENETEAU BOAT MODELS



## ***Oceanis 51.1***

Length Overall 50'7"  
Hull - beam 15'9"



## ***First Yacht 53***

Length Overall 56'2"  
Hull - beam 16'5"



## ***Oceanis Yacht 54***

Length Overall 56'2"  
Hull - beam 16'5"



### ***4JH80 + SD60***

15 mhp / 10 kW  
3600 rpm

option: ***4JH110 + ZF30M***

80 mhp / 58.8 kW  
3200 rpm





## ***Oceanis Yacht 60***

Length Overall 59'10"  
Hull - beam 16'9"



### ***4LV150 + KMH50A***

150 mhp / 110 kW  
3500 rpm

“

TODAY AND IN  
THE PAST,  
OUR PARTNERS  
HAVE SURPASSED  
EXPECTATIONS  
TO CREATE  
THE BOATS  
OF THE FUTURE.

As an international leader in the nautical industry, the BENETEAU boatyard must meet the highest standards. Working with the best partners in each specialized area contributes to our expertise and success.

”



# YM SERIES

The YM series mechanical engines are known for their reliability and uncomplicated maintenance. Simplicity at its best offering low noise, durability and easy accessibility for maintenance especially designed for smaller sailboats.

	2YM15	3YM20	3YM30
Rated Output	10 kW / 14 mhp	15.3 kW / 21 mhp	21.3 kW / 29.1 mhp
Rated Speed	3600 rpm	3600 rpm	3200 rpm
Displacement	0.57 L / 34.7 cu. in	0.854 L / 52.1 cu. in	1.266 L / 77 cu. in
No. of cylinders	2 cylinders	3 cylinders	3 cylinders
Cylinder Bore x Stroke	70 mm x 74 mm / 2.75 in x 2.91 in	70 mm x 74 mm / 2.76 in x 2.91 in	80 mm x 84 mm / 3.15 in x 3.31 in
Combustion system	Indirect Injection, In-line Pump	Indirect Injection, In-line Pump	Indirect Injection, In-line Pump
Aspiration	Natural	Natural	Natural
Alternator	12V - 125A	12V - 125A	12V - 125A
Dry weight without gear	103 kg / 227 lbs	220 kg / 485 lbs	127 kg / 280 lbs
Dimensions	613 mm x 463 mm x 600 mm	694 mm x 463 mm x 600 mm	715 mm x 485 mm x 545 mm
Controls	Mechanical	Mechanical	Mechanical
Certifications	RCD 2, EPA Tier 3, EPA Tier 3C, BSO II EMC		



# JH SERIES

Demonstrating YANMAR's '5x best in class' features – Clean, Interconnective, Quiet, Powerful, Fuel Efficient – the 4JH-CR series sets the global standard in sailboat and small craft propulsion.

	4JH45	4JH57	4JH80	4JH110
Rated Output	33.1 kW / 45 mhp	41.9 kW / 57 mhp	58.8 kW / 80 mhp	80.9 kW / 110 mhp
Rated Speed	3000 rpm	3000 rpm	3200 rpm	3200 rpm
Displacement	2.19 L / 131 cu. in	2.19 L / 134 cu. in	2 L / 122 cu. in	2 L / 122 cu. in
No. of cylinders	4 cylinders	4 cylinders	4 cylinders	4 cylinders
Cylinder Bore x Stroke	88 mm x 90 mm / 3.46 in x 3.54 in		84 mm x 90 mm / 3.31 in x 3.54 in	
Combustion system	Direct Injection, Bosch Common Rail System			
Aspiration	Natural	Natural	Turbocharged & Intercooled	Turbocharged & Intercooled
Alternator	12V - 125A	12V - 125A	12V - 125A	12V - 125A
Dry weight without gear	220 kg / 485 lbs	220 kg / 485 lbs	229 kg / 505 lbs	229 kg / 505 lbs
Dimensions	870 mm x 589 mm x 627 mm	870 mm x 589 mm x 627 mm	909 mm x 613 mm x 675 mm	909 mm x 613 mm x 675 mm
Controls	Mechanical (optional - VC10 system)			
Certifications	RCD 2, EPA Tier 3, EPA Tier 3C, BSO II EMC, SOLAS			



# 4LV SERIES

The 4LV series engine raises the standard for engines in its class, with exceptionally low noise and vibration alongside the 2.8 L displacement delivering powerful low-end torque and stunning acceleration.

	4LV170
Rated Output	125 kW / 170 mhp
Rated Speed	3500 rpm
Displacement	2.755 L / 168 cu. in
No. of cylinders	4 cylinders
Cylinder Bore x Stroke	92 mm x 103.6 mm / 3.6 in x 4 in
Combustion system	Direct Injection, Denso Common Rail System
Aspiration	Turbocharged & Intercooled
Alternator	Denso 12V - 130A
Dry weight without gear	334 kg / 736 lbs
Dimensions	1151 mm x 755 mm x 772 mm
Controls	Mechanical (optional - VC10 system)
Certifications	RCD 2, EPA Tier 3, EPA Tier 3C, BSO II, EMC, SOLAS

# 5x BEST IN CLASS

## CLEAN

Exceeds strict EPA Tier 3 and EU RCD Tier 2 emission regulations, providing a nearly smoke and odor free experience.

## INTERCONNECTIVE

Engineered with direct connectivity to the latest integrated control and monitoring systems, supporting advancing marine technologies.

## QUIET

Technology that enables exceptionally low vibration and noise levels, ensuring a smooth and quiet running engine.

## POWERFUL

Class leading power to weight ratio and low-end torque performance.

## FUEL EFFICIENT

Digital controls monitor the engine to minimize fuel consumption and optimize performance.

## 5 YEAR EXCLUSIVE YANMAR Engine Coverage



**Beneteau and YANMAR proudly offer a 5 year warranty on your YANMAR engine. This exclusive warranty is available to Groupe Beneteau brands only. Feel confident in your voyage with the reliability of a YANMAR, the world's largest support network, and now an exclusive 5 year warranty.**

	Standard Limited Warranty Leisure	2+3 Year Coverage Sail Boat Engines	Beneteau
General explanation	The warranty is described in the YANMAR Limited Warranty Handbook as delivered with the engine. The warranty conditions may change. The warranty handbook delivered with the engine at the date of sale ex-works is applicable unless otherwise agreed by the sole discretion of YANMAR Marine International B.V.	This coverage only applies only on applicable YANMAR products delivered to their original retail purchaser after 1st July 2013.	This warranty applies only on applicable YANMAR products used in vessels of the different brands of Groupe Beneteau delivered to their original retail purchaser after 1st September 2019.
Warranty Start date	Delivery date of the boat to the owner by invoice date	Delivery date of the boat to the owner by invoice date	Delivery date of the boat to the owner by invoice date
Usage of the vessel	Leisure Usage by private owners	Leisure Usage by private owners	Leisure Usage by private owners
Engines (months/hours )			
2YM15, 3YM20, 3YM30AE, 3JH40, 4JH45, 4JH57, 4JH80 & 4JH110	24	24 (standard) +36	60
4LV150/170/195, 6LY400/440	24	-	60
Marine gear/saildrive (months/hours)			
SD25 / SD60	24	24	24
ZF Gears, including SPP	ZF Warranty Conditions	ZF Warranty Conditions	ZF Warranty Conditions
Kanzaki Gears	24	24	60
Covered options			
VC10	Yes (24)	24	Yes (60)
Mechanical options sold to fit the engine into the propulsion package	Yes (24)	24	Yes (60)
Parts & Service			
Parts covered by warranty policy	All parts which failed due to a YANMAR Workmanship or material failure (24)	Exclusive parts like starter, alternator, instrumental panel and VC10, JC20 etc, check Limited Warranty Handbook for detailed description	All parts which failed due to a YANMAR Workmanship or material failure (60)
Travel cost from dealer to the boat	Ex-Gratia, 2 hours/300km	Ex-Gratia, 2 hours/300km	Ex-Gratia, 2 hours/300km

- The 5YR Beneteau warranty applies only on applicable YANMAR products used in vessels of the different brands of Groupe Beneteau delivered to their original retail purchaser after 1st September 2019. Delivery date of the boat to the end-user to be proven by invoice, when requested.
- Usage of the vessel is limited to leisure/pleasure/recreational usage by private owners.
- Complete product must be registered within the first 12 months of ownership, including connection of data from the private owner in the YANMAR Marine Support Portal.
- All maintenance must be done within the YANMAR network by authorized service centers.
- YANMAR Genuine Parts must be used.
- Parts covered by warranty policy: All parts which failed due to a YANMAR workmanship or material failure.
- Please refer to the YANMAR Limited Warranty Handbook for the definition of light duty commercial and leisure usage.

# CAREFREE YEARS ON THE WATER

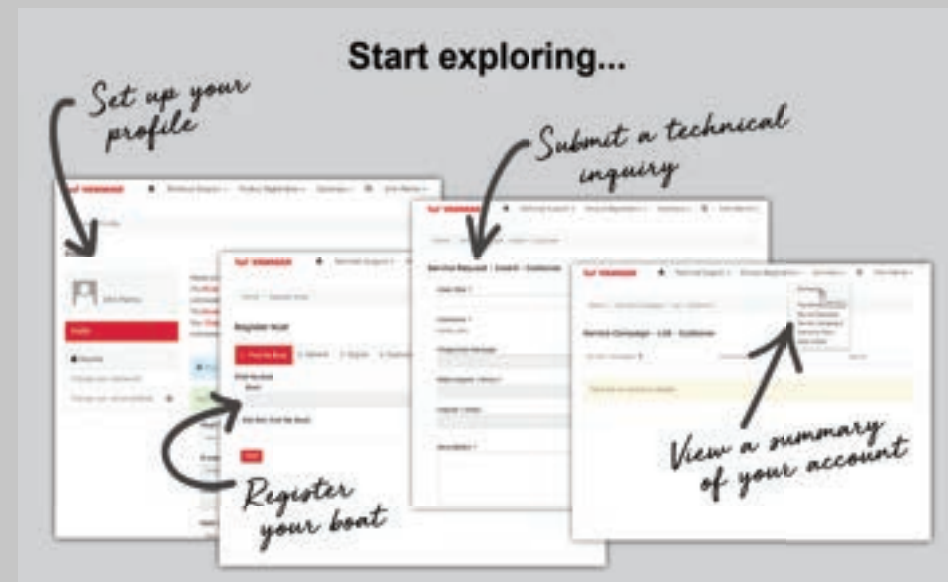


## REGISTER *Your Engine*

YANMAR Marine International boasts the largest support network in the industry and we strive to provide the best experience for the life of your engine ownership. We are pleased to provide an online portal for your engine information, communication, and maintenance tracking.

The **YANMAR Marine Support Portal** makes it easy to manage information about your YANMAR propulsion system:

- Register your engine
- Submit technical inquiries
- View service campaigns
- Manage your owner's profile and preferences
- Record service and maintenance history
- and much more ...



# MORE THAN THE BEST ENGINES

## NEXT GENERATION CONTROLS



### B25 Panel

Optional for JH and 4LV sailboat engine series.



### C35 Panel

Optional for JH and 4LV sailboat engine series.



### YD42 Multifunctional color display

View engine speed, oil pressure, wind, depth, AIS data and more at a glance. Optional for JH, 4LV, 8LV & 6LY engine series.



### VC20 Display with A15 start/stop panel

Optional for JH and 4LV engine series, a VC20 panel with A15 start/stop panel instead of YD25 Panel.



## VC20 VESSEL CONTROL SYSTEM WITH YD42 COLOR DISPLAY

Featuring simplified electrical management, a high-quality appearance, and significant functional improvements, the next generation YANMAR VC20 Vessel Control System integrates with YANMAR's complete line up of common rail engine series, transmissions, controls and displays.

The YD42 Multi-Function Color Display is a smart, multi-purpose instrument featuring a compact full color display, modern glass styling, with the ability to read and display YANMAR engine alarm and diagnostic troubleshooting codes. View engine speed, engine load, oil pressure, coolant temperature, wind, speed, depth, AIS data and more at a glance.



# GLOBAL SERVICE NETWORK

YANMAR's worldwide support consists of an established network of over 2000 Authorized YANMAR Distributors and Dealers, in over 130 countries, ready to ensure the proper service and support that your YANMAR demands.





# THE GLOBAL STANDARD IN SAILBOAT PROPULSION

[WWW.YANMAR.COM/MARINE](http://WWW.YANMAR.COM/MARINE)

